

# COMPREHENSIVE GUIDE TO BUDGETING A LANDSCAPE PROJECT

THE ESSENTIAL GUIDE FOR ANY LANDSCAPING JOB BIG OR SMALL. THE MOST CRITICAL FACTORS THAT DETERMINE COST FOR SEVEN DIFFERENT LANDSCAPE CATEGORIES

1. PATIOS
2. WALLS
3. PLANTINGS
4. LAWNS
5. IRRIGATION
6. LIGHTING
7. LANDSCAPE AMENITIES



**PETERSON**  
*Companies*



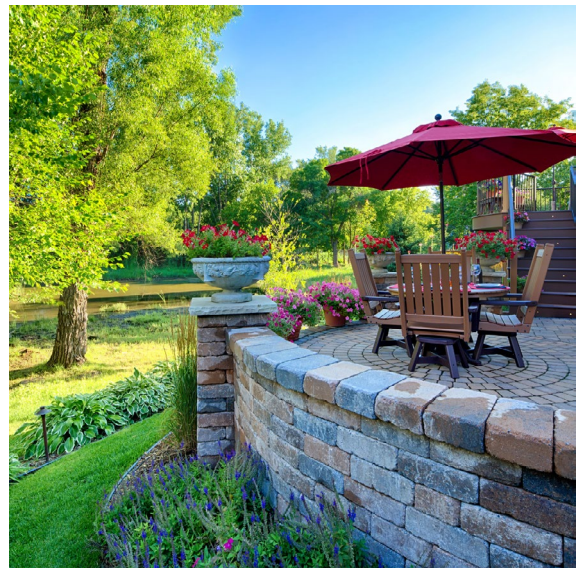
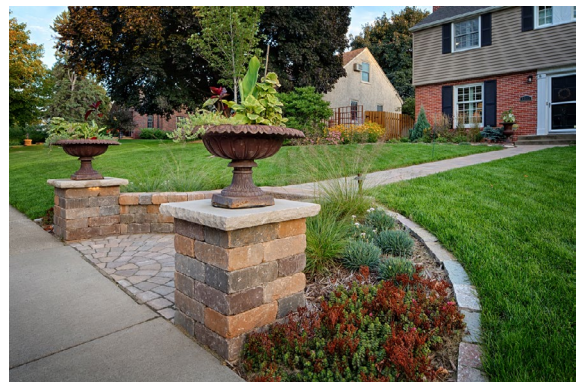
# INTRODUCTION

Let's face it, a landscaping project can add amazing value to your home and lifestyle, but it is also a major investment. A project can range from \$2,000 to over \$100,000 depending on your needs and choices. With so much to consider -- size, material options, environmental conditions -- no wonder many homeowners find that building a realistic budget for a landscape project can be a daunting challenge.

In this paper, you'll learn the key factors that determine the cost of the seven popular landscaping categories listed below. We hope this information will give you insight and increase your confidence when budgeting for your dream project. At the end of each chapter, you'll also find cost estimate information (based on cost numbers for the Midwestern Region -- Minnesota, Iowa and Wisconsin) which could help you further fine tune the financial figures.

1. PATIOS
2. WALLS
3. PLANTINGS
4. LAWNS
5. IRRIGATION
6. LIGHTING
7. LANDSCAPE AMENITIES

We hope you'll find this information useful. At Peterson Companies, we aim to share our knowledge and experience to help homeowners actualize their landscaping dreams.



## THE FOUNDATION TO OUTDOOR LIVING

There's no doubt a new patio will add to your outdoor living enjoyment. It is a great opportunity to grill, lounge, or entertain on beautiful summer nights. In addition to the great memories and moments to be had on your patio, the average return on investment of a patio is 30%-60%. If you're concerned about maintenance, not only is an outdoor patio more durable than decks, but it also requires less maintenance. However, when budgeting for a patio, consider these key factors as they will determine the overall cost of your project:



- Size of Patio
- Material Used
- Soil Condition
- Project Access

### 1. SIZE OF PATIO

Obviously, the bigger the patio, the more it will cost to build due to the extra time and materials used in the design and construction phases. To help determine the size of your patio, think about its function and purpose. For example, are you planning to host large parties, such as graduation, bridal showers, or smaller alfresco dinners with family and friends? What type of outdoor furniture would you like to have? And how about amenities such as an outdoor kitchen or a fire pit to spice up the environment?



## 2. MATERIALS

There are a wide variety of materials available for a patio. Below are a few options that will affect your bottom line:

- **CONCRETE SLAB**

Is the least expensive material for a new patio. It's simply concrete poured to the desired shape. You can dress up your concrete slab with outdoor throw rugs and colorful plantings.

- **STAMPED (DECORATIVE) CONCRETE**

Costs more than concrete pavers, but mimics the unique designs and color patterns of higher cost materials such as brick and natural stone.

- **CONCRETE PAVERS**

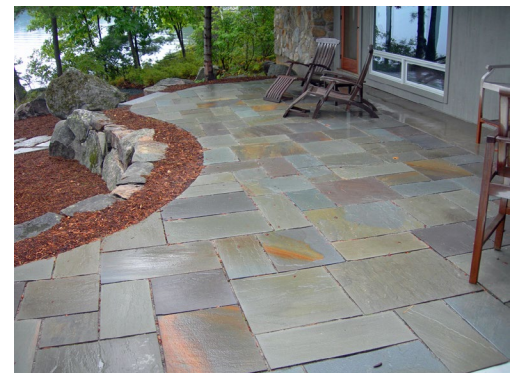
Costs more than a concrete slab, yet is decorative like clay (brick) pavers. Though concrete pavers may not have the longevity of brick pavers, they are a great cost alternative with a similar aesthetic.

- **CLAY (BRICK) PAVERS**

Can handle ice, foot traffic, and still look good as they age. Clay pavers cost more to install because of their uneven sizes and material design. They're an investment that lasts generations compared to concrete pavers that may only last a decade or so.

- **NATURAL STONE**

Is longer-lasting, formal or informal, and requires little maintenance. A natural stone patio comes in many different shades, textures, and sizes. However, it does cost the most due to longer installation time, material costs and installation difficulty due to varying size and shape. If you're looking for a casual, rustic, or classic style, you may want to consider natural stone.





## 3. SOIL CONDITION

Before any work can begin on building your new patio, we need to prepare the soil to sustain it. If your soil is in poor condition, we'll need to excavate the site to stabilize it for patio construction. Thus, you'll have additional costs due to soil prep—especially if you have heavy clay or rocky soil—two excavation challenges. This investment however, will save you money in the long run because a well-constructed patio won't need future repairs or a complete renovation due to faulty soil base preparation.



## 4. PROJECT ACCESS

If your patio project is complex -- for example, a large patio with intricate design or one that requires extensive plumbing & electrical work -- then extra machinery or heavy equipment is needed. If the access path to the work site is constrained (too narrow or restricted) and larger machines can't be brought in readily, the more complex working conditions can add additional costs to the project.

# PATIOS

## HOW MUCH DOES A PATIO COST?

Additional considerations include elaborate shapes and designs. If you want something other than a standard rectangular patio, your costs will be higher for the extra labor. Also, irregular stone shapes require additional stone cuts—adding to the cost for labor and stone waste.

### CONCRETE



- SIZE: 10X20
- SHAPE: RECTANGLE
- SITE ACCESS: NORMAL
- SOIL CONDITIONS: AVERAGE

#### ESTIMATED PRICE

**\$1,700 – \$2,500**

- A basic poured concrete patio with a brushed finish is the least expensive option.
- Stamped and colored concrete will raise the price closer to a paver patio cost.

### PAVER



- SIZE: 10X20
- SHAPE: RECTANGLE
- SITE ACCESS: NORMAL
- SOIL CONDITIONS: AVERAGE

#### ESTIMATED PRICE

**\$2,500 – \$5,000**

- Depending on the paver style, pattern, and brand, the material costs can vary as much as \$10 per square foot. A higher end paver with a complex pattern will increase material cost and can add to labor costs as well.

### STONE



- SIZE: 10X20
- SHAPE: CUSTOM
- SITE ACCESS: NORMAL
- SOIL CONDITIONS: AVERAGE

#### ESTIMATED PRICE

**\$5,000 – \$9,000**

- Natural stone has a wide range of prices based on stone type, size, and availability. Stone is priced by weight rather than square footage.
- The labor costs with natural stone can be three times more expensive since each stone is unique in size and shape. The stone requires much more care during installation.



## FINDING THE RIGHT WALL FOR YOUR LANDSCAPE

Most people install retaining walls to protect their property from water damage and soil erosion. However, small retaining walls can also be used to beautify your landscape by adding dimension, texture, and borders for flat landscapes. Retaining walls can also create terraced gardens for properties with steep slopes.

There are five areas that will affect your budget when it comes to retaining wall design/build:

- Size & Engineering
- Material
- Site Access
- Excavation & Removal
- Extras



### 1. WALL SIZE & ENGINEERING

Taller walls cost more to build -- any wall taller than 4' costs more to construct because it requires engineering and materials such as Geogrid to ensure stability. The price is also affected by how much load the retaining wall needs to hold as well as the amount of base, backfill and drainage needed for engineering and construction. The taller and longer the retaining wall, the more engineering needed to design the backfill, drainage, weight and height involved in building it.

# RETAINING WALLS

## 2. MATERIAL

Just like patios, there are a variety of choices from which to choose, each impacting cost differently. Although poured concrete and wood are also used to build retaining walls, for residential landscaping they are not as common as the following types of retaining walls:

### BOULDERS

Boulders are the most affordable option compared to Mod-Block or Natural Stone. They're relatively easy to install and can achieve a naturalized appearance in the landscape.



### MOD-BLOCK

Mod-blocks are very popular for retaining wall construction and come in a wide variety of designs and colors. Since mod-blocks are pre-fabricated and fit together like Legos, their prices are reasonable but vary due to the limitless designs, cuts and colors.



### NATURAL STONE

Natural Cut Stone is a luxurious & durable option for a retaining wall. It is also the most expensive option to install. The extra time involved in cutting natural stone contributes to its total price tag, but will great and last many years.



## 3. SITE ACCESS

A site where masonry and needed materials can be delivered directly to the location of the wall is going to be less expensive than one where materials must be hand carried due to narrow sidewalks or limited backyards. Keep in mind your yards accessibility when considering overall costs.



# RETAINING WALLS

## 4. EXCAVATION & SPOIL REMOVAL

Larger walls or those with extensive engineered footings will require a great deal of excavation. Removal of a large amount of spoils can drive up costs, as does the demand for a great deal of fill behind a wall.



## 5. AESTHETIC EXTRAS

There are a wide variety of extras that can transform a generic retaining wall into something spectacular. These decorative features cost more but can be added over a period of time rather than all at once. It comes down to what you'll be using the retaining wall for, as well as your entertaining needs, how long you'll be living in your home, and how much you can afford at this time. Such decorative features include:

- Caps
- Ledges
- Mortar
- Outdoor lighting
- Pillars
- Seating areas
- Steps
- Unique designs
- Water features.

# RETAINING WALLS

## HOW MUCH DO RETAINING WALLS COST?

Additional considerations include elaborate shapes and designs. If you want something other than a standard retaining wall your costs will be higher for the extra labor. Also, irregular stone shapes require additional stone cuts and time to place stones—adding to the cost for labor and stone waste.

### BOULDER



- SIZE: 4X20
- TYPE: RETAINING
- SITE ACCESS: NORMAL
- SOIL CONDITIONS: AVERAGE

**ESTIMATED PRICE**  
**\$2,900 – \$3,900**

- A Glacial Boulder wall is the least expensive option. The material cost is low and the installation time is quick.
- This type of retaining wall is very popular and the availability of product is abundant.

### BLOCK



- SIZE: 4X20
- TYPE: RETAINING
- SITE ACCESS: NORMAL
- SOIL CONDITIONS: AVERAGE

**ESTIMATED PRICE**  
**\$3,500 – \$7,000**

- Depending on the block style, and brand, the material costs can vary as much as \$10 per square foot.
- The installation of a block wall works similar to legos and is quite easy to build for a trained landscape company.

### CUT STONE



- SIZE: 4X20
- TYPE: RETAINING
- SITE ACCESS: NORMAL
- SOIL CONDITIONS: AVERAGE

**ESTIMATED PRICE**  
**\$6,000 +**

- Natural stone is the most expensive material option.
- The installation of a natural stone wall requires that each piece fits perfectly together. But stone is irregular in size and shape, so this process can be very labor intensive.



## 5 FACTORS OF A COMPLETE PLANTING PROJECT

A beautiful landscape is every homeowners dream, but is difficult to achieve. Like most projects, the quality of the final product starts from the ground up. Trees, shrubs, and flowers may be the star of the show, but neglecting the four other areas of landscaping will leave you disappointed with your yard. Doing the proper research, and following each step of a carefully crafted design will allow you to achieve the perfect yard with great curb appeal. Or it can transform your yard into that backyard oasis you've dreamed of. Follow these five steps for a complete planting project.



- Excavation
- Soil Amendments
- Plants
- Edging
- Mulch

### 1. EXCAVATION

Excavation is more than just the hole you dig to put your plant in. It is the removal of debris, and grading of soil that your plants will live in and take shape. In many instances, old gardens have poor drainage, are littered with debris, and extensive weeds. It is crucial to fix any low spots or slopes that drain towards the foundation of the house. This will prevent flooding, mold, and deterioration to the foundation and basement. Weeds such as Creeping Charlie and Wild Violets are extremely difficult to get rid of. Most chemical applications are ineffective to killing these weeds with their extensive root systems. If not completely removed from the dirt itself, those pesky weeds will eventually make their way back into your garden.

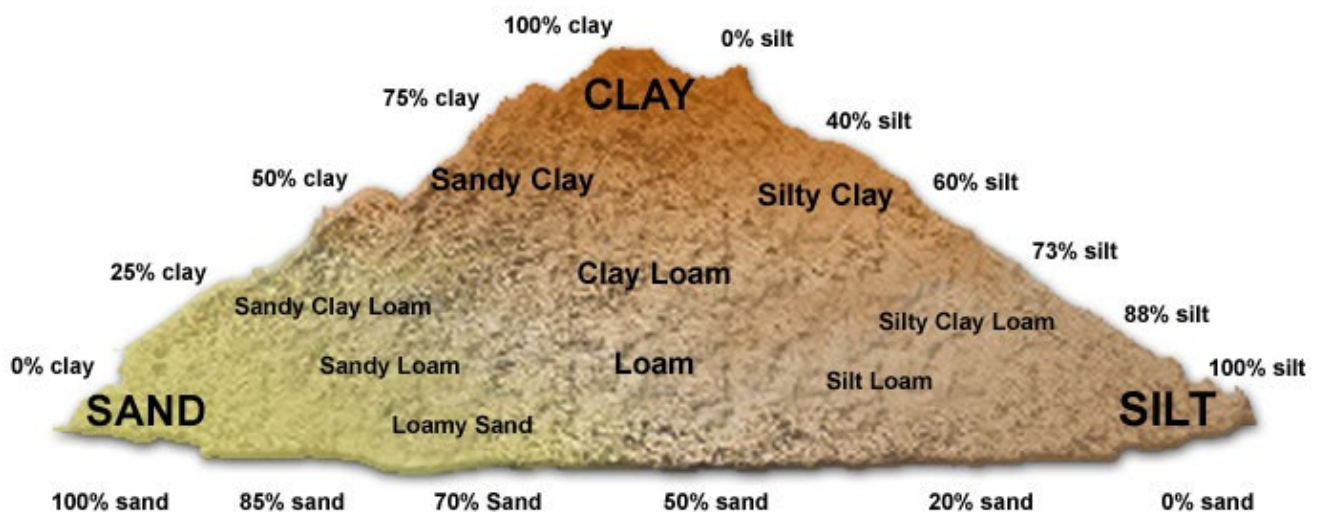
# PLANTINGS

## 2. SOIL AMENDMENTS

Plants can offer so many great shapes, colors, and smells but none of that would be possible without the healthy soil they live in. Soil can vary greatly in its composition; it can be heavy clay or sandy, acidic or basic. Each plant will have a preference of what type of soil it thrives in.



The ideal soil condition for most plants is loam. Loamy conditions provide a nice blend between sand and clay for moisture retention, oxygen, and nutrients. It's not too dense like clay, or porous like sand, but is still rich in nutrients. In order to achieve loam soils in the garden, you must amend the soils. Add the prescribed garden blend, compost, or potting soil, then mix and till it into the existing beds. This will break up the soils and give a nice fluffy environment for the roots to grow deep. Other additives to soils can be peat moss, pine needles, etc. for a more specific composition depending on the plants being used.





## 3. PLANTS

This is the fun part of your landscape design and those dirt beds can start to take shape. When selecting the right plants, a simple trick is to define what your ‘big picture goal’ is for the space. Are you looking for privacy and space to entertain outside? Or are you looking for that backyard oasis that you escape to after work? Do you want seasonal interest and habitat for birds, or a low maintenance garden that improves curb appeal? Defining these goals for yourself will make the process much easier when selecting plant types, size, and quantities. The other factors that determine the success and health of the landscape may require more research or help from professionals. These factors are:

- Full Sun vs Shade Plants
- Wet Soil vs Dry Soil Plants
- Acidic vs Alkaline Soil
- Seasonal Interest
- Maintenance & Pruning



Ideally, you should have a balanced mix of trees, shrubs, perennials, and evergreens. Nearly every plant retailer will provide sun, soil, and zone requirements for the plant as well as other useful information such as size and flower color. Most retailers and landscape companies offer a one year warranty on all plants. If a plant is diseased or dies prematurely, they will replace it if it's within that one year time frame. The price range for plants is vast. A large ‘Ball & Burlap’ tree or evergreen can cost upward of \$500, while most perennials can be purchased for less than \$10. However, the impact and longevity of the larger shrubs and trees will be much greater than perennials.

## 4. EDGING

You can define where your lawn ends and where your garden begins by edging the borders. Edging keeps mulch and stones in your landscape beds and keeps lawn clipping out of your gardens. It is a small feature that can ease your efforts when maintaining your yard. Installing edging also enhances the visual impact of gardens by creating a clean and crisp line. The three most common edgings materials are:

### PLASTIC

Inexpensive and easy to install. It's flexibility enables natural curves and disappearing lines. Price ranges from \$0.50 - \$1.50 per linear foot.

### STEEL

Is a very durable and effective material for garden edging. Steel edging comes in varying thickness and multiple styles. Price ranges from \$2.50 – \$5.50 per linear foot.

### STONE

Natural stone is the most expensive of the three material. It gives a naturalized look to the garden and will stand the test of time. Price ranges from \$3.70 - \$6.50 per linear foot.





# PLANTINGS

## 5. MULCH

The last step for your planting project is to put the finishing touch on your garden by adding mulch. Mulch provides landscape beds, trees, and shrubs with several environmental and maintenance benefits.

- Retains moisture.
- Prevents erosion.
- Reduces weeds.
- Adds nutrients into soil as it decomposes
- Protects plant roots from temperature extremes

Wood mulch is the most common and comes in various forms and colors. You can simply chip an old tree and spread it in the beds, or for a nicer look, you can purchase bags of mulch from a landscape supply store, order a large quantity delivery, or have a landscape company add it to the other landscape services they provide. Here are three popular types of mulch:

### CEDAR



**\$46 PER YARD**

### COCOA



**\$35 PER YARD**

### HARDWOOD



**\$30 PER YARD**

Other popular forms of mulch that are considered lower maintenance are decorative rock and recycled rubber. Rubber is typically used in playgrounds rather than gardens for its safety value. Rock however is very common in residential yards. There is a wide range of rock shape, color, and size available for you to find the best fit for your garden. Using these forms of mulch however do not add any nutrients or other environmental benefits to the plants compared to wood mulch. In fact, rock mulch has the tendency to heat up the soil underneath, which can have a negative effect on the plants. You want to make sure you are using the proper mulch type to fit your aesthetic, function, and budget.

## 4 COMPONENTS OF LAWN INSTALLATION

A well-maintained lawn not only improves the curb appeal of your property, but helps prevent erosion and controls pollutants in ground water. A lawn renovation is a labor-intensive project, but skipping early steps will greatly reduce the quality and health of the lawn. Here are the four main factors to consider when installing a new lawn.

- Excavation & Grading
- Irrigation System Preparation
- Application Method
- Timing



### 1. EXCAVATION & GRADING

Whether you're renovating your lawn or installing one for a new home, the soil will need to be cleared of rocks, debris, and vegetation. This prevents any objects or weeds to disrupt the growth of the grass. If this step is skipped, dormant plants with deep roots including weeds will compete with the grass for space. Often times, new soil needs to be brought in for the proper nutrient, oxygen, and moisture makeup for healthy lawns. Once the soil is cleared and prepped, it needs to be graded into a smooth and uniform plane. Any bump, dip, or imperfection will still show after the grass is grown. This can result in drainage inconsistencies and unsightly ridges. To properly excavate and grade a yard, heavy equipment is often required.

### 2. IRRIGATION SYSTEM PREPARATION

A landscape company or irrigation engineer will be able to design the proper system to meet your lawns needs. They will consider the size and shape to determine the amount of zones and sprinkler heads to include. The irrigation piping and sprinkler heads are placed slightly below ground and hooked up to your homes water supply. This step happens before the final grading of soil and should be coordinated with the company in charge of grading and the company installing the lawn.



# LAWNS

## 3. APPLICATION METHOD

You can either have your lawn installed by sod rolls or by seed. Installing sod is more expensive, but the result is nearly instant. This is a good option for home associations and yards that need to be finished by a deadline. The rolls of sod are simply unrolled and laid out in strips similar to carpet. The second option is seeding. This application method takes longer for the grass to grow and establish, but will yield the best results long term. Seeding should be done in the spring or fall to protect seedling from the hot summer sun and dry conditions. The soil and irrigation prep is the same for both methods.



## 4. TIMING

If you're looking for immediate results, sod is your best bet. After it's installed, it only takes two to three weeks to establish. However, if you seed your lawn, it can take up to two to three months until it's completely developed. Your property goals and budget will help determine which method is best. Are you are planning a party within the first month? Sod may be the better option. If you have the time and patience to wait, seeding your lawn may be the most economical choice and will lead to great results.



Smooth Grading



Seed & Erosion Blanket



First Sprouts

# LAWNS

## SEED



### ESTIMATED PRICE PER SQUARE YARD

**\$2 – \$5**

- TIME: 2 – 3 MONTHS
- Seeding your lawn is the easiest and least expensive, but requires 2-3 months for the grass to establish before it can be used.
- A lawn started by seed is the best quality lawn long term.

## SOD



### ESTIMATED PRICE PER SQUARE YARD

**\$4 – \$7**

- TIME: 2– 3 WEEKS
- Sod installation is more expensive and labor intensive but, it's quick. It only takes 2-3 weeks for the sod to establish and then be used.

Lawns require lots of water to grow vigorously and strong, especially in the early stages of establishment. The typical grasses used in residential landscapes have shallow roots compared to the native prairie grasses. Deep roots allow the plant to retain water and soil moisture for long periods of time during droughts, and don't require as frequent watering. Since the roots of Kentucky Blue Grass - the most popular lawn grass – are just a few inches deep, having an irrigation system is extremely important to the health of a yard.

A healthy, lush lawn will crowd out weeds, resist disease and insects, and requires less herbicides to keep it looking verdant. Experts say you should water your lawn in the early morning hours when the wind is low and the water won't sit on your turf-grass for a long time. The ideal time? Between 4:00 a.m. and 10 a.m. By installing an irrigation system, you're able to set the timer for early morning irrigation and control how much water is used in each zone.



## GETTING SMART TO SPRINKLER INSTALLATION

Maintaining a luscious lawn can be a tedious task if done manually. If you don't want the added responsibility of watering the lawn with garden hoses, it's time to consider installing an irrigation system. Today's irrigation systems are equipped with timers, as well as weather or moisture sensors to control the amount of water used each day. Additionally, investing in a drip irrigation system for your trees, beds, and other plants will save money because water is sent directly to the plants' root systems. Besides the convenience of automation, a well-designed irrigation system can also conserve water consumption by as much as 50% compared to portable sprinkler systems.

An irrigation system is a complex network of pipes, valves, irrigation heads and electrical control wire which serves as the circulatory system for your lawn and landscape. As such, it's best to hire a licensed contractor to install the system.

There are three areas that will affect your budget when it comes to a new irrigation sprinkler system:



- Property Size
- Quality of Products
- Additional Plumbing Needs

# IRRIGATION SYSTEMS

## 1. PROPERTY SIZE

The biggest budgeting factor is the size of the property. The bigger the property, the more materials will be needed -- pipes, sprinkler heads, valves, etc. Sprinkler heads are grouped into zones -- each zone typically has 5-8 heads depending on water pressure. Once the plumbing and electrical infrastructure is installed for the system (initial zones), adding additional zones will be less expensive. As such, homeowners can install an irrigation system incrementally if the initial budget can't cover the whole project at once.

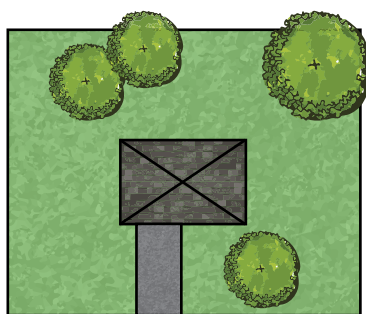
## 2. QUALITY OF PRODUCTS

The second important factor that determines overall cost is the quality of the system -- pipe, sprinkler heads and timer system. Sprinkler heads in particular get the most active use so it's important to select products from reputable manufacturers. At Peterson Companies we install Hunter®, Rain Bird® and Toro® irrigation systems for residential landscaping projects.

## 3. ADDITIONAL PLUMBING NEEDS

In homes where there isn't a readily accessible external spigot for the sprinkler system, additional plumbing work will be needed to extend water supply to the yard from inside the house. So check your property and budget for extra if this is indeed an issue.

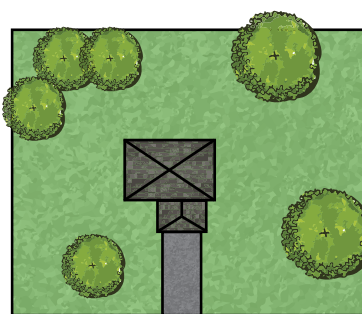
### 1/4 ACRE



**ESTIMATED PRICE**  
**\$1,700 – \$2,100**

- ZONES: 4 – 8
- HEADS: 8 – 20

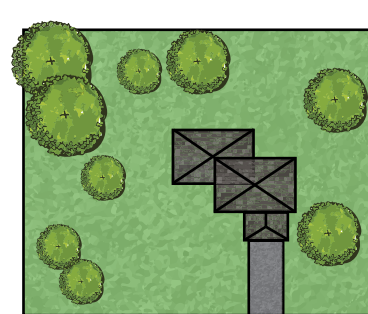
### 1/2 ACRE



**ESTIMATED PRICE**  
**\$2,100 – \$2,700**

- ZONES: 8 – 12
- HEADS: 20 – 45

### 1 ACRE



**ESTIMATED PRICE**  
**\$2,700 – \$4,000**

- ZONES: 12 – 20
- HEADS: 80

## MORE THAN JUST LIGHTS

When done right, landscape lighting can be much more than just lighting up a dark space. It can be used to add drama and to accentuate hardscape features. For example, you can use landscape lighting to mimic the moon shining down on a tree, spotlighting your home or directing cars up your driveway. For guests or even prospective buyers of your home will greatly appreciate the safety and security benefits of outdoor lighting.



With so many different uses and styles in outdoor lighting, where do you begin addressing the issue? Talking to a lighting specialist or landscape company will help refine your wants and needs for lighting. The fixtures, light type, and technology are all areas you, as the homeowner can control and put your unique style on.

- Fixtures
- LED vs Incandescent
- Smart Technology



# LANDSCAPE LIGHTING

## 1. FIXTURES

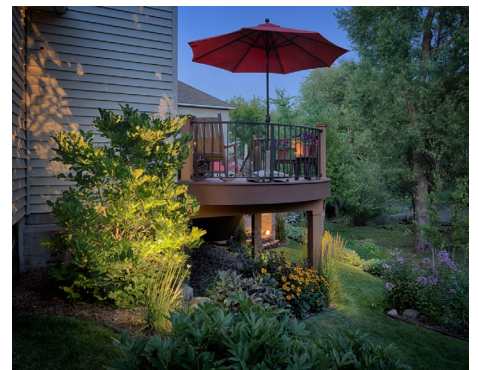
It is recommended that you install only metal fixtures, such as copper, bronze, aluminum or steel. These metals vary in price, but will withstand the weather throughout the year better than plastic materials. The architectural style of the fixtures are broad and can compliment any space. Browsing an esteemed light fixture website or catalog will give you countless ideas to match your house and landscape style.

## 2. LED VS INCANDESCENT LIGHTS

Incandescent lights are the most commonly used and are less expensive in up-front costs, but they do have a shorter lifespan compared to LED lights. LED lights will last about 40,000 hours or 18 years and they have improved greatly in color options. You no longer have to settle for a harsh blue light – LEDs now come in soft white and yellow lights for a more welcoming effect. You'll pay about 25% more to install LED lights, but will save up to 75% on your electrical bills over time.

## 3. SMART TECHNOLOGY

An outdoor lighting system carries the same features as flood lights or lamp posts with on/off switches, motion control, and timers. Additionally, many of the newer systems are actually capable of installing smart technology so that you can control the lights by smart phone. If the lights are too bright while entertaining outside, rather than walking back to the house where the switch is, you can simply adjust the dim on your phone. These additions are roughly \$100 in extra expenses.



## HOW MUCH FOR THE EXTRAS?

When the snow melts in spring, it's hard to keep Minnesotans indoors for any reason. This includes cooking, entertaining, and relaxing. It's a lifestyle shift to fully embrace the outdoor room and include landscape amenities in the backyard. Imagine yourself roasting marshmallows or cooking a meal as the soothing sounds of bubbling water fill your yard. Outdoor living is more than just a patio, it's an extension of your home and can be enjoyed three seasons of the year. The three most popular amenities include custom outdoor kitchens, fire pits or fireplaces, and water features.

### 1. OUTDOOR KITCHEN

Do you love to cook for parties, but loathe being stuck inside while everyone enjoying the party? Today's outdoor kitchens allow you to cook an entire meal – from preparation to desert – all outside. The extent and function of your kitchen is completely up to you. Base models will include a built-in grill, counter space, and small storage. For the avid grill master or entertainer, custom kitchens can come fully equipped with refrigeration, a wine cooler, sinks, bar counter, and even wood fired pizza ovens. The size, shape, and material is only limited by your imagination and budget.

#### BASE



**ESTIMATED PRICE**  
**\$3,700 – \$4,500**

- A base model grill kit includes counter top and storage.
- Larger styles, higher end materials, and extra features raise the price per item.

#### CUSTOM



**ESTIMATED PRICE**  
**\$8,000 +**

- Higher end materials and size can drastically increase the cost.
- Add-ons can include refrigerator, sink, extra storage, bar counters, etc.

# LANDSCAPE AMENITIES

## 2. FIREPLACE OR FIRE PIT

Do you love the intimacy of a fireplace to have quiet conversation and a glass of wine? Or would you rather gather in a circle around fire pit for light, warmth and a place to roast marshmallows? Fire features are one of the hottest backyard trends and can be found in almost every Minnesota backyard. Fireplaces can be focal points with detailed stonework and fire pits can have built-in seat walls surrounding them. A fire feature also lets you enjoy the outdoors early in the spring until late fall—extending the use of your outdoor living spaces. Wood-burning fire pits are very common and affordable. But for those who dislike smoke and enjoy the convenience of flipping a switch, gas fueled fire pits are a fantastic option. Like your patio choices, fireplace and fire pit prices will vary depending on the material used to build it, and whether you use wood or gas.

### BASE



**ESTIMATED PRICE**  
**\$800 – \$1,000**

- SIZE: 48" X 12"
- TYPE: WOOD FIRE
- MATERIAL: BLOCK & STEEL

### CUSTOM



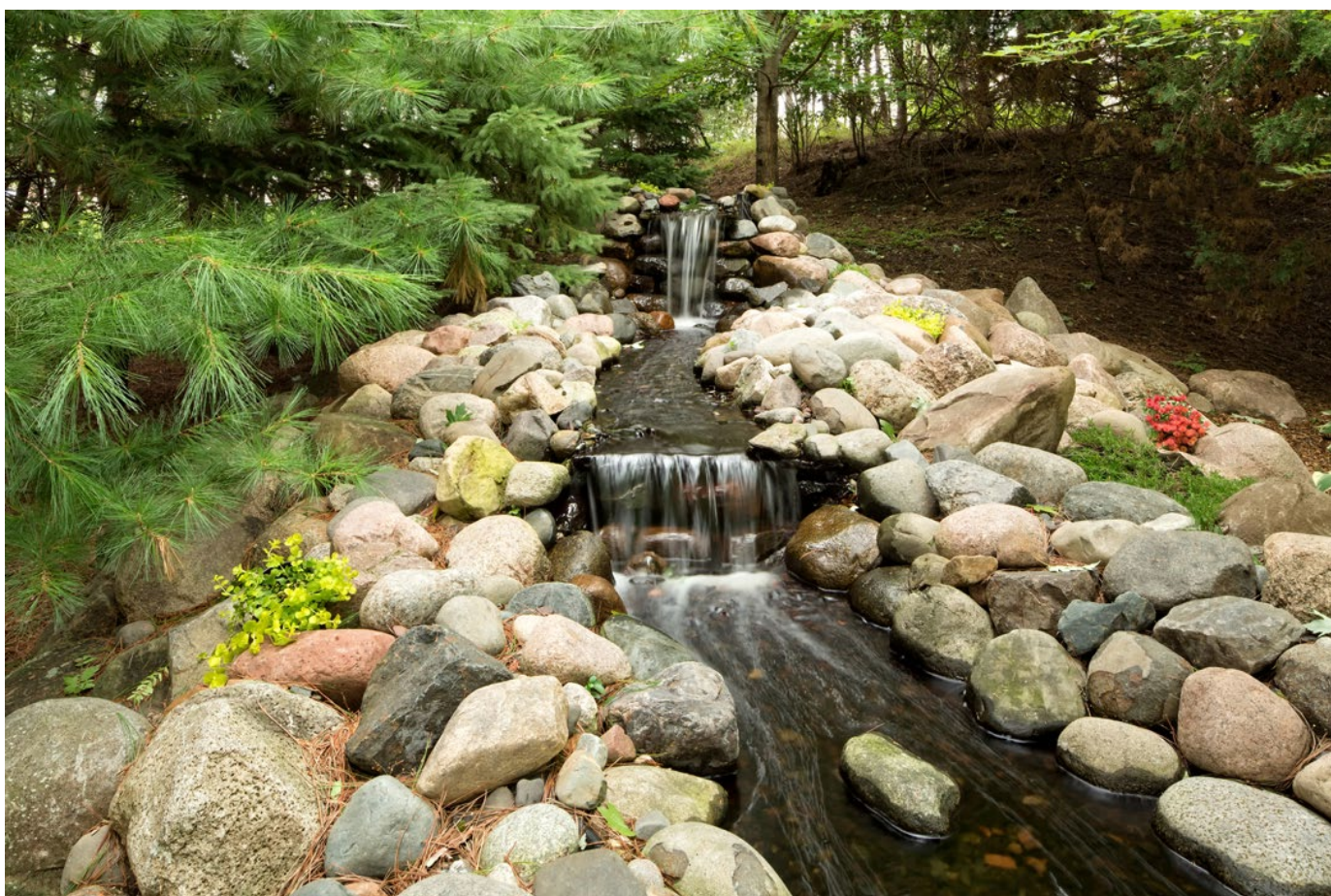
**ESTIMATED PRICE**  
**\$1,600 +**

- SIZE: 48" X 20"
- TYPE: GAS
- MATERIAL: STONE & STEEL



## 3. WATER FEATURES

The amenity that can be the cherry-on-top of the perfect outdoor room is a water feature. Most of us want that calming retreat with bubbling water or a unique landscape that features a Koi pond. The audible, and visual qualities water can bring to a space elevate the outdoor room to the next level. Options can range from simple self-contained bubblers to rustic waterfalls and ponds. You can add aquatic plants and fish to your water feature to create an interesting place to relax and enjoy. Each water feature depends on the space and homeowner. A landscape design company will be able to provide the perfect design to fit your lifestyle and aesthetic.





# CONCLUSION



Navigating the design and budgeting process of landscape projects can be very difficult. Hopefully this guide has helped you to understand the majority of factors that determine landscape cost, and has educated you to make crucial design decisions. Your landscape is only as good as the materials chosen and the proper research completed beforehand. A well maintained yard and outdoor rooms are a luxury that can enhance your enjoyment and add value to your home. With a well-designed plan, your residential landscape will continue to improve over time and transform a dated and uninspiring yard into your backyard oasis.

## SERVICES



WALLS & PATIOS



LANDSCAPING



IRRIGATION



DESIGN



SEED & SOD



WATER FEATURES



OUTDOOR LIGHTING



MATERIAL DELIVERY



EXCAVATION & UTILITIES



ATHLETIC FIELDS & FACILITIES



COMMERCIAL MAINTENANCE



FENCING & SITE AMENITIES

For 20 years, we've been serving homeowners in Minnesota and Wisconsin to bring their landscaping dreams to life. From turning a unkempt backyard into an oasis to transforming a small space into an urban retreat with meticulous design and water features, we've done it all.

Our teams strive to delight customers with great value, professionalism, and exceptional service throughout the project journey. We offer a full range of hardscape and softscape design and installation services.

### **SUPERIOR VALUE**

GREAT QUALITY | GREAT PRICE

### **EXCEPTIONAL SERVICE**

EXTENSIVE SERVICE PORTFOLIO

### **PROFESSIONAL INTEGRITY**

ON TIME | ON BUDGET | ON THE MARK